

## TECHNICAL REPORT

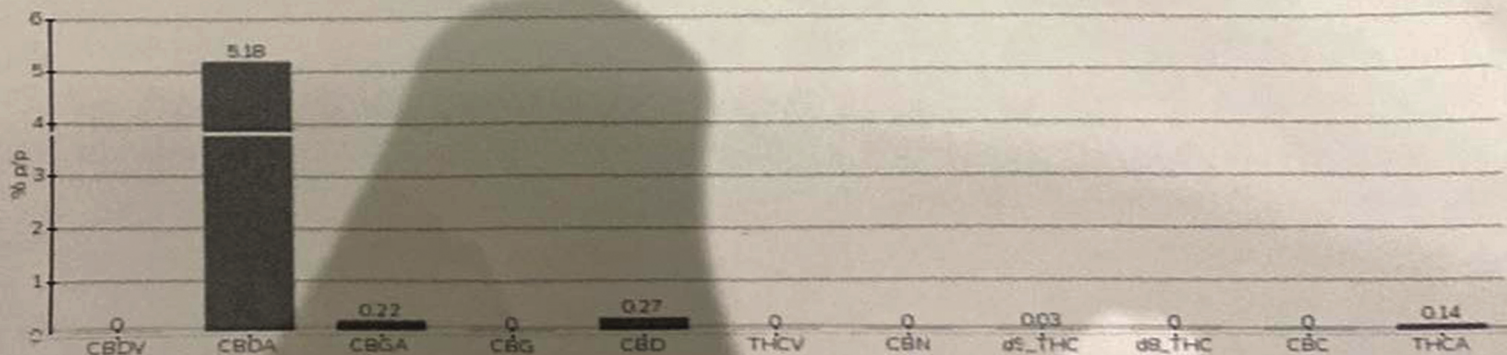
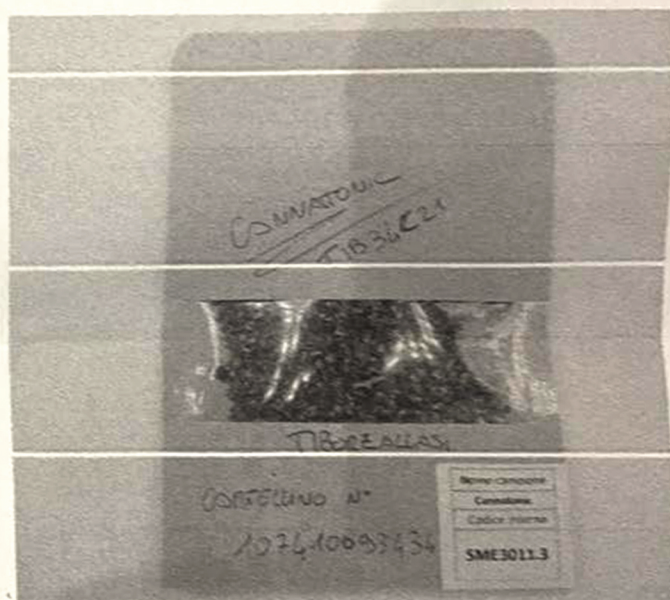


<b>Committente</b>	Smel ss	<b>Etichetta</b>	Cannatonic
<b>Data accettazione</b>	30/11/2021	<b>Tipologia campione</b>	infiorescenza
<b>Data analisi</b>	02/12/2021	<b>varietà</b>	Tiborszallasi
<b>Codice riferimento interno</b>	SME3011.3	<b>N. Cartellino</b>	107410093434
<b>Metodica analitica</b>	HPLC - HS - Rev.2	<b>Campionamento</b>	a cura del cliente
<b>Lotto</b>	TIB34C21		

### Note

Parametro	% p/p	Metodo
CBDV	<0.01%	HPLC-UV
CBDA	5.18%	HPLC-UV
CBGA	0.22%	HPLC-UV
CBG	<0.01%	HPLC-UV
CBD	0.27%	HPLC-UV
THCV	<0.01%	HPLC-UV
CBN	<0.01%	HPLC-UV
d9_THC	0.03%	HPLC-UV
d8_THC	<0.01%	HPLC-UV
CBC	<0.01%	HPLC-UV
THCA	0.14%	HPLC-UV
<b>CBD TOTALE</b>	<b>4.81%</b>	<b>CALCOLATO</b>
<b>CBG TOTALE</b>	<b>0.19%</b>	<b>CALCOLATO</b>
<b>THC TOTALE</b>	<b>0.15%</b>	<b>CALCOLATO</b>

CAMPIONE ANALIZZATO: Tiborszallasi(3.00gr)



Pineto

02/12/2021